



The News

October 28, 2004

Gilman School

www.GilmanNews.com

Volume CIV, No. 3



The Gilman community preferred to have Senator John Kerry over President George W. Bush for USA's next president. Poll results are on Pages 4-6. (Photo from the AP)

The Polls Are In: An Analysis of the Gilman Community's Political Views

BY SAM NOVEY

If America left the job of electing the President up to the Gilman community, John Kerry would be our next president. According to The Gilman News Survey taken on Friday, October 22, Kerry wins by a comfortable margin- (182-138); 56.8% Kerry to 43.1% Bush. When the surveys of the faculty are thrown out, however, and only the ones of the student body counted, Kerry still wins, but the margin of victory is slimmer; 53.8% Kerry to 46.1% Bush. While the student body is split nearly down the middle, similar to the entire country, 82% of the faculty supported Kerry. This difference between the students and faculty was most evident in the recent Iraq forum assemblies. While at the student forums, there was vigorous debate; at the faculty forum, not a single teacher who spoke supported the President's policies. The majority of the school as a whole is either liberal or undecided, with a smaller amount supporting a conservative political philosophy.

The survey takers also thought that the most pressing issues for the elected president was the war in Iraq, terrorism, and the economy. An interesting result was that despite Kerry winning out in the school election, more students believed that President Bush would fulfill his campaign promises. This suggests that school members are more convinced that President Bush will stick to his initial plan, but they disagree with it more than with Kerry's plans.

In his acceptance speech at the Democratic National Convention, John Kerry declared, "This is the most important election of our lifetime." This belief is the driving force in reenergizing the American electorate after years of growing apathy towards the political process. By the 2000 election, many Americans had begun to feel that their votes were insignificant. People believed the two

major political parties had become corrupted by special interests and preoccupied with moving to the center and pandering to the latest change in public opinion. These tendencies had caused the Parties to lose their respective identities; they had grown so similar that there was no difference between them. The public's attitude toward the 2004 election, however, could not be more different. The Gilman community fits with the national trend toward a more engaged, polarized electorate with energized bases for both sides. Eighty-five percent of the Gilman community is following the presidential race, with 46% of the community following it daily.

The events of the last four years have changed the way Americans perceive the political process. President Bush's narrow victory in the highly controversial 2000 election drove home the importance of every vote. The Bush Administration's controversial policies, and the opposition with which the Democrats have met them have clearly shown that there are most definitely major differences between the two parties. Finally, 9/11, the ensuing wars on terror, and the war in Iraq have heightened interest in American politics. The decisions of our politicians are tempered not only by a cost in taxpayer dollars but also by a cost in American lives. As America has become more politically aware, so have America's teenagers. The Orlando Sentinel says that there is a wave of teens who are not yet old enough to vote but who are, nonetheless shaping this year's election through a level of political partisanship not seen since the Vietnam War era. It is a trend that should continue, onward to the next election, when Gilman students of 2008 shall hopefully raise their voices of opinion.

Gilman Joins the Country's Political Spirit

BY JED DIAMOND AND BRANDON HAMMER

This year's coming election has made political issues vibrant topics at Gilman. There have been two forums on Iraq where both faculty and students voiced their views. Furthermore, the Young Democrats Club and the Young Republicans Club are more active than most years; each has about forty members. Both clubs are working to raise support for certain issues. The YDC is selling "No CARB Diet" (Cheney, Ashcroft, Rumsfeld, Bush) shirts to raise money for aid to the Sudan, and the YRC has shown various movies including Michael Moore's "Fahrenheit 9/11" in order to raise discussion about the current war in Iraq. Members of the clubs have also campaigned for their respective candidates.

Dr. Kelly and Mr. Heubeck, faculty advisors to both clubs, hope to lead these two groups in discussions throughout the year. On October 25th, however, they turned the tables by having the clubs debate in favor of the candidate of the opposite party during assembly. Dr. Kelly said he was organizing this form of debate because "I didn't want our clubs to just go up there and rant about the candidates." Juniors Zahir Rahman, Daniel Strauss, and Alex Kelly represented the YDC, and juniors John Black, Peter Hawkins, and Justin Levitas represented the YRD. The leaders of both groups, nevertheless, wanted to express their real views. Therefore, the News decided to host a debate. We asked Black, chair of the YRC and Rahman, co-chair of the YDC four questions:

News: President Bush has said that John Kerry "flip-flopped" on multiple decisions such as voting for, then against \$87 billion dollars for soldiers in Iraq. The President also claims that after Senator Kerry called Saddam Hussein a terrorist, he said it was a mistake to remove him from power. Do you

believe Kerry is "wishy-washy"?

Zahir Rahman: I think that George W. Bush and his administration have blown John Kerry's record apart. John Kerry has principles, and he will stand by them. While it is important to see the character behind John Kerry, his voting record is irrelevant. It is true that Kerry gave President Bush the authority to invade Iraq if it was absolutely necessary for the security of the American people. John Kerry along with many congressmen believed that Bush would not be ignorant enough to actually invade Iraq without real allies based on information of phantom WMDs and faint connections between Saddam Hussein and Al Qaida. Kerry also went to war and understands what it is like to be a soldier, and he knows the risks involved.

John Black: Kerry's record in the Senate is key to understanding him as a person. I think the best way to judge someone is by looking at their past, and Kerry's past is full of a lot of inconsistencies. Not only on foreign policy and the war in Iraq. He voted against the Gulf War, he flopped on education, [and] he supported and was against the Patriot Act. Moving on to the war in Iraq, there are over 30 nations involved. Also, Kerry's military record is important, but I did not realize that you needed military experience to be president.

News: Affirmative Action is an important issue for many Gilman students. Kerry supports it, and Bush is opposed. How do you feel?

JB: I don't think Affirmative Action works. I think it goes completely against its purpose, which is to bring underprivileged people from low-income societies... into colleges just to get

continued on Page 6

Inside This Issue...

Features: Graphs of Gilman's Survey Results (Pages 4-6)

Opinion: The Success of Clubs Assembly; Response to Senior Speech (Page 2)

Arts: Roland Park's *The Sound of Music* (Page 3)

Sports: Varsity Football vs. Loyola (Page 8); Water Polo and XC Recaps (Page 7); Intramural Hockey (Page 7)

FROM THE EDITORS...

Upper School's Clubs Assembly a Good Idea Without Foundation

With the sophomores and juniors in a form meeting for PSAT prep, Gilman freshmen and seniors participated in the first Clubs Assembly. The problem however, was that not all freshmen and seniors participated. In fact, very few did, as many just went to an early lunch. In theory, the Clubs Assembly was a time allotted to the clubs on campus to come together and have meetings when everyone is free from such conflicts as labs, music programs, or athletic contests. The exercise of this idea was not quite successful, and the problems need to be addressed for future Clubs Assemblies.

First, there is a need for proper preparation in advance to be allotted to the club presidents. The student body did not know about the Club Assembly until a few days before, giving club leaders little time to plan a program for the club. Many clubs have fliers for meetings a week before the actual meeting, and this late notice gave club leaders little to do at the Clubs Assembly.

Another problem was the conflict for students who are members of more than one club. Meetings are typically set at various times of the week to prevent conflicts between other club meetings. To have all the clubs meet at once means that a student may only go to one of the clubs. This prevents students from experiencing new clubs and looking for new endeavors. Students have to

choose which club takes precedent, also leading to limited attendance for many clubs. In addition, students who are presidents of their respective clubs have no choice but to stick with the club they are leading. There should be a specific schedule splitting clubs meeting times in three ways, with a third of the clubs meeting at 10:55, the next at 11:10, and so on. This would diminish the conflicts among the clubs and give more structure to the Clubs Assembly.

With this structure in place, underclassmen should have to participate in at least one club. For underclassmen, students may be unwilling or afraid to join a new club of interest. With mandatory attendance, students will be pushed to explore new activities and perhaps find a hobby that will change their life. Also, with more young students participating, club progress can be more efficient and productive.

Finally, the Clubs Assembly needs to either have full participation from all grades or no participation at all. The initial Clubs Assembly included only half the student body, and this greatly hindered the clubs productivity. To render these clubs useless for the assembly is unfair and pointless. With several improvements, the Clubs Assembly can be a great source for student extracurricular participation for the future.

-MMY

LETTERS...

The first of the Senior Speeches this year, given by School President Paul Stack, focused on the role of alcohol in our society. As he introduced his topic, most were expecting to be lectured once again about the detriments of alcohol and the methods one should employ to stave off peer pressure. Instead, Stack proceeded to deliver an interesting analysis of the allure of drinking in today's society.

He suggested that the negativity surrounding drinking as a major part of its attraction to young adults. Because many families in this country are so rigid in shielding their children from alcohol, when these children grow older and encounter drinking at parties or wherever (as they are sure to do at some point), they haven't the slightest idea how to handle it. As an alternative, Stack cited the European examples of France and Italy. In these countries,

children benefit from seeing their parents and other adults drink responsibly. Instead of merely preaching the evils of alcohol, these parents teach their sons and daughters to respect alcohol, resulting in fewer episodes of alcohol abuse.

The view expressed by Stack is too often dismissed in this country because it is considered radical. However, sheltering children from issues in society until they are adults is a method that continues to fail. Perhaps an alternative method of gradual exposure to alcohol would indeed be a better way to reduce the alarming statistics on alcohol abuse among teens in this country. It is my hope that the perspective expressed by Stack can become a topic of discussion within the Gilman community in the weeks to come.

-Chris Sheridan '08

Participation With the Alpine Tower Returns to High Heights

BY BEN SMALL

To the uninformed upper school student, the massive, wood, tower-like structure in the lower fields may seem like some ingenious contraption created by Assistant Dean Smith to torture students who missed study hall or were not in dress code. Although Mr. Smith may now be interested in putting that idea to use, the tower is, in reality, built for climbing. The Hardie (class of '74) alpine tower has long been a presence on the Gilman campus. For years, students have worked together to conquer the tower while building important life values of teamwork and camaraderie. Unfortunately, in recent years, this asset has not been given its just amount of use.

Mr. Carey and a dedicated group of upper schoolers, however, are out to put the tower to good use and show that it truly is a treasure to the Gilman community. The alpine tower group consists of an intramural, a club, and a team who will learn to direct upper school classes through the structure. Mr. Carey, the faculty advisor to all of these activities, said the tower is a great place to "work with group dynamics...you get to see group dynamics in a different setting." This "setting" allows for students to exhibit leadership and teamwork skills outside of the classroom, while also providing students with the means by which trust can develop between climbing partners. Mr. Carey hopes that both the challenges presented by the tower and the need for two people

to overcome these challenges will lead to such results.

Mr. Carey, a leader of the new Outdoor Adventures Club at Gilman, also hopes that the involvement in the alpine tower "goes towards a stronger outdoors program in the athletic system at Gilman." This idea has already come to fruition somewhat as many participants in the upcoming Outdoor Adventures Club trip are also members of the Alpine Tower Club. Mr. Carey hopes that both clubs will lead to even more trips in the future. He noted also that strong athletics are already available at Gilman, but he believes that the alpine tower can provide students with another exciting option if "we try to...work within the athletic system." Matt Council '05, president of the Alpine Tower Club, commented, "We've had a good showing at meetings so far...it looks like we should have good participation at the tower also." The club has already met three times down at the tower during fourth and fifth periods and has begun to work with the equipment and get familiar with all aspects of climbing. One of the best parts about the club is that anybody interested can participate. No experience is needed. All that is necessary is a free fifth period and a love of climbing. Remember to make sure that the fifth period is free, however, or else you may find yourself at the tower with Mr. Smith under less enjoyable circumstances.

Gilman School



(410)323-3800 ext. 265
www.GilmanNews.com

The *Gilman News* welcomes letters to the editor, columns, and artwork from Gilman students, teachers, faculty, alumni, and from the community-at-large. The *News* reserves the right to edit all articles for length and grammar. Send correspondence to thegilmannews@hotmail.com, or to:

The Gilman News
Gilman School
5407 Roland Avenue
Baltimore, Maryland 21210

Editors-in-Chief.....Matt Youn
Christian Flow
Managing Editors.....Keun Hee Oh
Ben Small
Community Editors.....Michael Eisenstein
Zahir Rahman
Layout Editors.....Georgios Gittis
Tommy Park
Sports Editors.....David Fine
Jordan Tucker
Arts Editors.....James Griffin
Chris Hong
Business Editor.....Jeremy Batoff
Circulation Editor.....Teddy Davidson
Faculty Advisors.....Will Perkins, Cesare Ciccanti,
Michael Kelly

Contributors: Ben Daly, Jed Diamond, Brandon Hammer, Adrian Kostrubiak, Sam Novey, Peter Rogers

Coming Up Next Issue...

- Photo-Feature of Halloween Assembly
- Winter Previews for Basketball, Indoor Track, and More
- Preview of Gilman's 9th-10th Grade Play
- Update on Carey Hall Renovations

Mr. Kirby Leads the Way For Gilman's Community Service

BY GEORGIOS GITTIS

A Gilman student cherishes his free time almost as much as he cherishes his sleep. This is not surprising, when we take into account the burden of a rigorous workload entailing frequent assignments, papers and tests, as well as extra-curricular and out-of-school commitments. Obviously, the last thing on every student's mind is adding more to his hectic schedule. For many, Gilman's community service program is merely another requirement for graduation, another bullet on their checklist, another hassle that simply takes up more of their time. This year, additions and revisions will be made to Gilman's existing service program that will allow students to choose from a wide variety of ways in which they can show their dedication to the community and at the same time not detract from their other obligations.

Last year, when Mr. Neun retired, he left his position as Director of Community Service vacant – an important position, and one not easily filled, but nevertheless, a position that Mr. Christian Kirby was eager to accept. Mr. Kirby, having been involved with community service projects for most of his teaching career, had both the experience and the interest necessary to satisfy the demands of the job. "The school asked me to direct the Community Service Program at Gilman," said Mr. Kirby, "and it just seemed like a good match."

Mr. Kirby quickly got to work, creating a committee of students to help manage and supervise the revision of the current program.

The committee will evaluate all elements of the existing service requirement, including the mandatory fifty hours of service that each student has to complete. Plans have been made to compare Gilman's program to those of other schools and to assess the needs

"A SERVICE PROGRAM HAS TO MEET THE NEEDS OF A COMMUNITY AS A WHOLE, SO THEREFORE WE WILL BE TALKING WITH SERVICE PROVIDERS TO GET FEEDBACK"

of the Baltimore community and also those of Gilman students. "A service program has to meet the needs of a community as a whole, so therefore we will be talking with service providers (like Our Daily Bread and Paul's Place) to get feedback," remarked Mr. Kirby, and he added, "At the same time I understand that much is demanded of Gilman students and that many take part in service outside of Gilman, so I want to be supportive of our goals without asking too much." There is no certainty regarding what changes will be made, and at the conclusion of their evaluation, it is likely that the committee may find the existing program to be acceptable. However, the committee will approach the evaluation with an open mind, examining all facets of the requirement.

The committee will also support and strengthen Gilman's other charity programs such as Green Grass, student mentoring at the Lab School, and assembling care packages for soldiers in Iraq. The Gilman food drive, formerly implemented only during the Thanksgiving and Christmas holidays, has become a year-round drive because, as the flyer states, people are hungry before and after Christmas and

Thanksgiving. Every week, donations of canned food, bread, peanut butter, jelly and other non-perishable foods will be taken to many of the most prominent community soup kitchens: Our Daily Bread, Franciscan Center, Beans & Bread, Manna House, Bentley Food Pantry, Food Bank and Echo House. Mr. Vishio has made an addition to the food drive by assembling a group of students to make bag lunches every Wednesday night using the weekly donations. All Gilman students and faculty members are invited to participate in the drive, whether they choose to volunteer services (by making lunches or helping transport the food to the kitchens) or to donate food and money.

Two new major activities will complement Gilman's community program – Habitat for Humanity and the Student Sharing Coalition. "For years, I had been impressed by Park School's commitment to habitat, and I thought it would be nice for Gilman to have our own habitat house," explained Mr. Kirby, "and the Student Sharing Coalition has assumed a very active role in the community through what they call 'service learning', so it makes sense that Gilman develops a closer relationship with them." Owning a Habitat house is an ambition not easily achieved because of the economic demands – sixty thousand dollars have to be raised – and the amount of labor that the project requires. However, the fact that many students, parents and faculty members have begun to contribute to Gilman's Habitat house are indicative of

a successful future for the program, giving committee members a good reason to approach the work with optimism.

The Student Sharing Coalition has been providing service programs for the Baltimore community since 1993. They partner with local schools and colleges to increase participation in ongoing community action projects and to facilitate leadership and service learning programs. The Coalition's overall goal is to engage students from diverse backgrounds in team-building activities, leadership training, and educational workshops about social issues, with the intent to "train a cadre of youth leaders whose contribution to their communities continues long after their involvement in the program ends."

Gilman has established an excellent reputation for itself as a school that does what is best for the community. Whether they participate in the Special Olympics for St. Elizabeth's School, annual food drives, tutoring programs or in outside service associations, like those in Churches or Synagogues, many students meet the lofty goals that Gilman has presented them with. All the careful planning would amount to nothing if student interest should dwindle, so the new affiliations and community service clubs encourage the students to stay involved, because the end result of Gilman's effort to benefit the Baltimore community can only be as successful as the students make it.



A poster for the musical. (Photo courtesy of www.rpcs.org)

Do Re Mi! The Sound of Music Comes to Roland Park

BY MATT YOUN

The theater is alive with the sound of music. Roland Park Country School's Sinex Theater, established in 1994, is celebrating its tenth anniversary with the fall Roland Park-Gilman musical *The Sound of Music*. Ten years ago, several donors helped to institute this theater, which has top-notch lighting and sound capabilities and seats 425 audience members. The theater's first musical was *The Sound of Music*, so it is fitting for the anniversary play to return to its roots.

The musical, the last collaboration of the famous duo of Richard Rodgers and Oscar Hammerstein II, is based off the story of the Trapp Family Singers. The musical was a gigantic Broadway hit, selling out every show for the first two years and gaining a large advance sale of about three million dollars. The musical was made into a movie in 1965 starring Julie Andrews and Christopher Plummer, a family movie for years to come.

The heartwarming tale starts with the nun Maria Rainer (Caroline Galvez '06), who is very liberated and not very committed to the schedule of the nuns. Concerned, Mother Abbess (Emily Palmer '07) urges Maria to reconsider her future and gives her the position of being a temporary governess for the widowed Captain Georg von Trapp (Billy McCarthy '05) and his seven pesky children. Over time, Maria is adored by the seven children, to whom she teaches the joy of music. A conflict of romance arises as the Captain begins a courtship with Elsa Schraeder (Mary Palmer '05) while Maria and Georg are falling in love with each other. The two must deal with this love triangle while also facing the rise of the Nazi regime

in Austria.

Scott Susong directs the school musical, with music directed by Rhonda AbouHana. Dana J. Martin is the head of choreography; the associate director is Amy Anderson. The cast consists of Roland Park and Gilman students from the Upper, Middle, and Lower Schools. Gilman Upper School Students in the musical include Jamie Apgar '05, Howie Fisher '06, Daniel Martin-Minnich '06, Gough Bolton '06, and Erik Davis '06, Zach Aaronson '07, and Steven Siwinski '08.

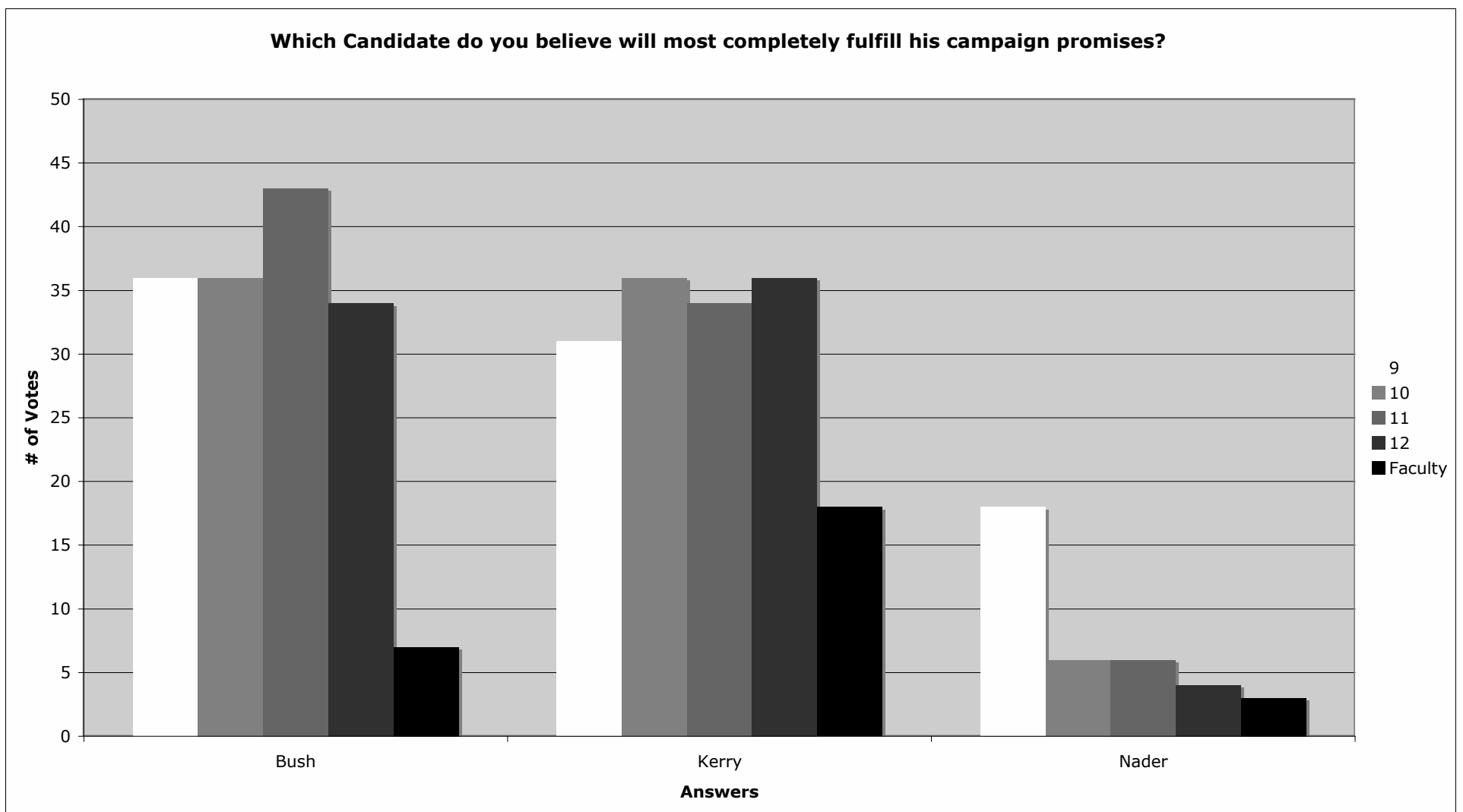
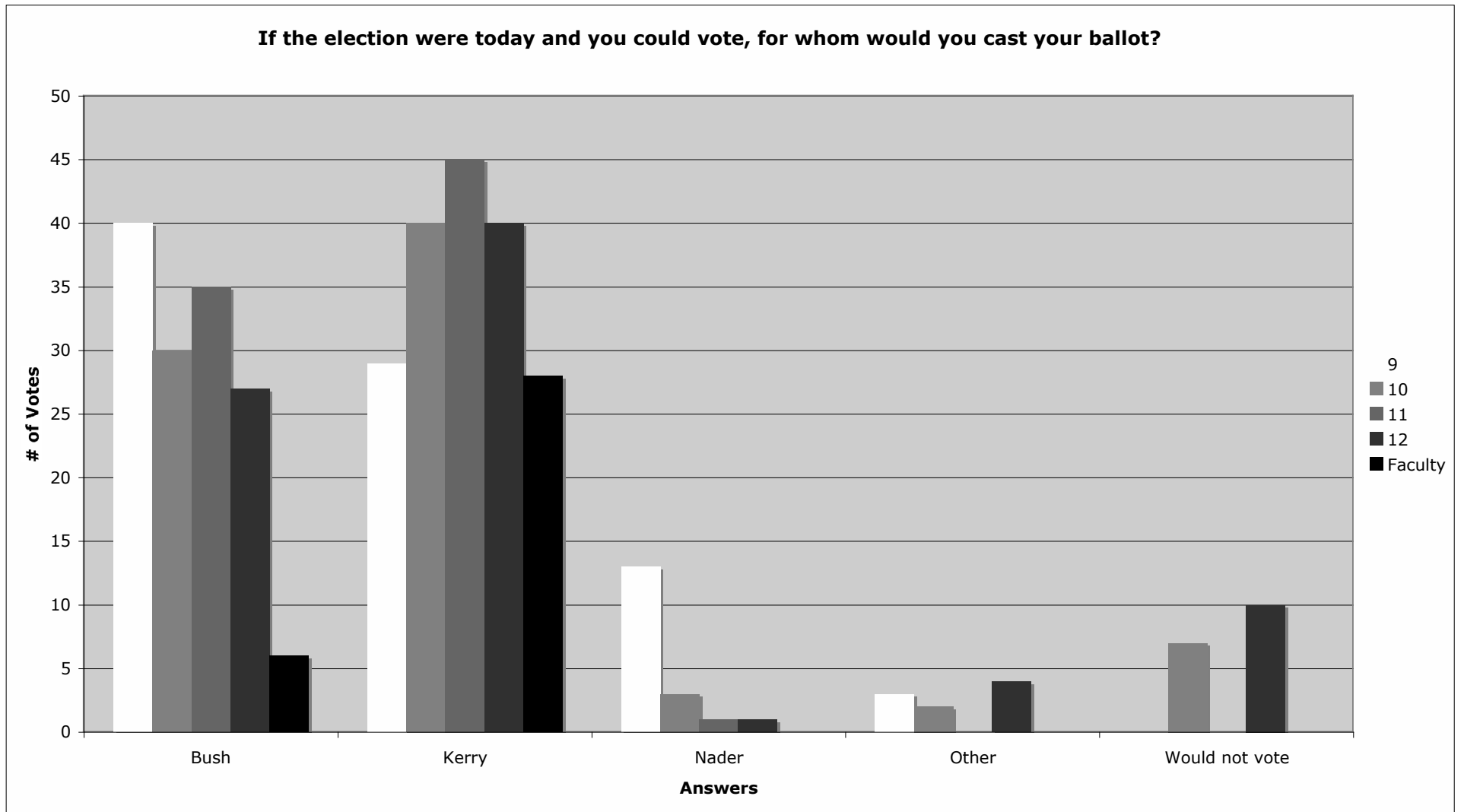
Although many people may have seen the musical in its movie version, there is much to look forward to in this adaptation stage. The musical will include two songs not seen in the movie, with a hilarious number between Max Detweiler (Martin-Minnich) and Elsa called "How Can Love Survive" and another song called "No Way to Stop It." In addition, there will be great wardrobe features, with a party scene with all the actors in period costumes while waltzing. The set has the largest budget in school history along with a new sound system of high production value.

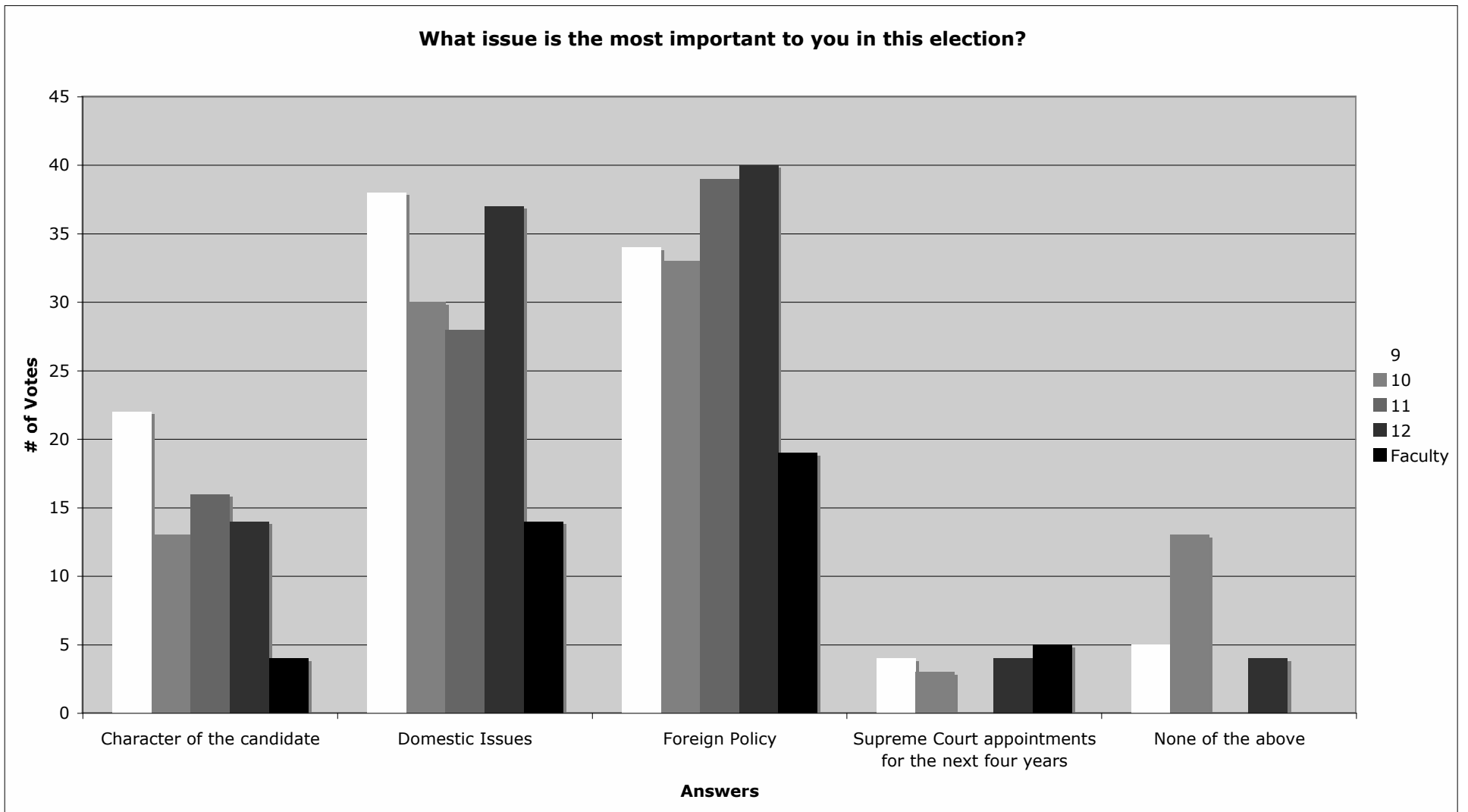
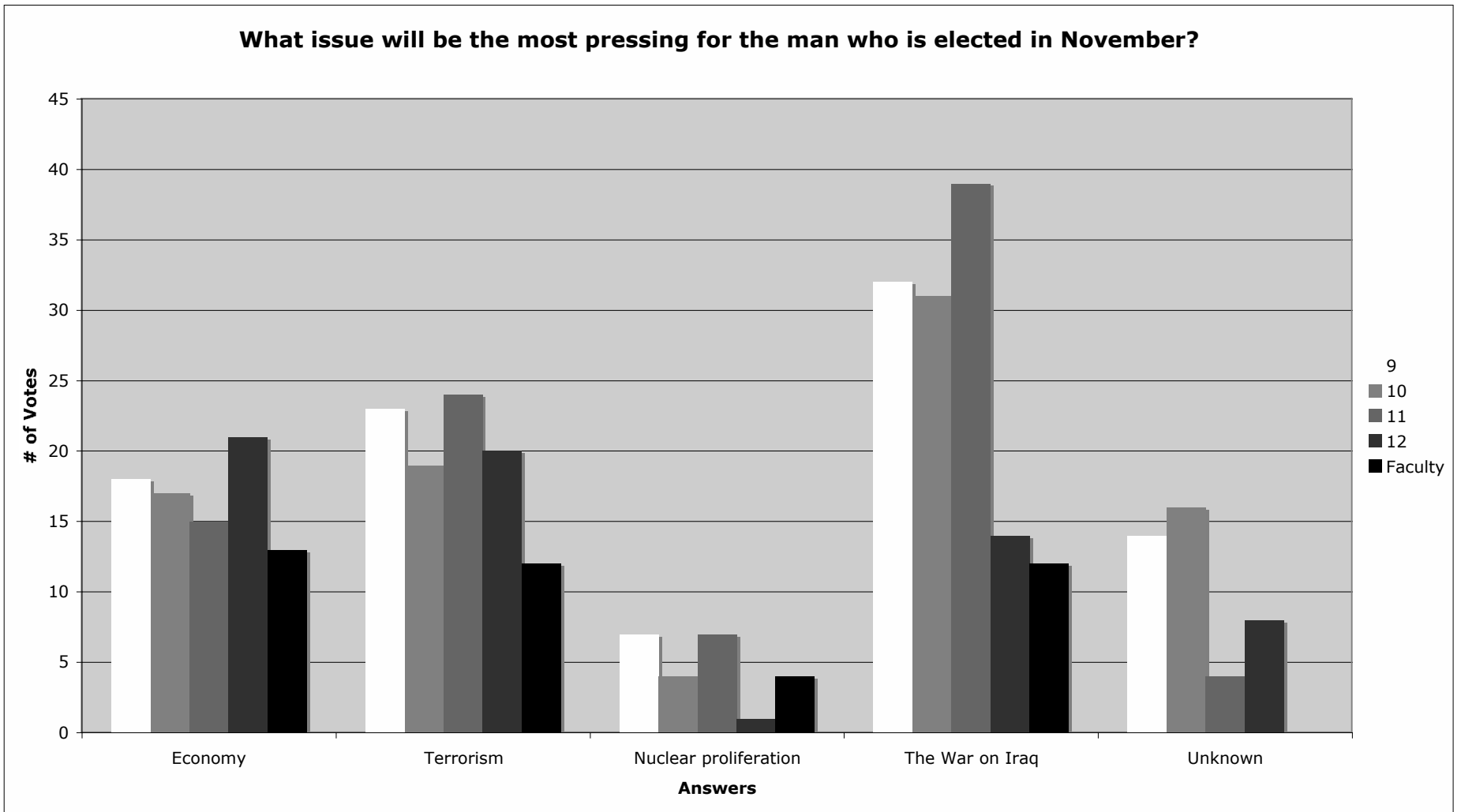
The musical will show four times, starting Thursday, November 11 at 7:30, then Friday, November 12 at 7:30, Saturday at 7, and Sunday at 2. Saturday will be a special night, with a gala and an alumnae reception for the members of the musical from ten years ago. Tickets are selling fast online at the Roland Park website (www.rpcs.org), with the Friday and Sunday shows already sold out. Don't miss out on a fantastic show, as McCarthy noted, "You can't hate me. I'm too lovable."

**PLEASE COME OUT TO THE
LANCERS GREATER
BALTIMORE WALK FOR THE
HOMELESS ON SUNDAY,
NOVEMBER 7TH, 9:00AM, AT
JOHNS HOPKINS.**

Gilman Goes to the Polls...

The Results...





The News Conducts a Political Debate

continued from Page 1

diversity. I think it discredits [some people] by saying that they're not good enough to get into this college without the government interfering and saying that we need to put you in there over someone who is more deserving just to get diversity. I don't think it's right. I don't think it should be ever allowed. And the best suited, most deserving person should get a position.

ZR: AA in its basis was first created to force diversity in schools, which I think is a good thing because it created a better understanding of people in the world. At this point, the theory of AA needs to change. Instead of focusing straight up on racial diversity, it also has to include economic diversity, helping low-income people with the same opportunities to get into schools. The whole philosophy behind the Democratic Party gives people the ability to be equals, and if you take away AA, that right gets taken away.

News: Stem cell research may lead to

cures and/or treatment for a plethora of diseases from cancer to diabetes to AIDS. Bush believes that Embryonic research is killing. Do you agree with this decision?

JB: Bush supports stem cell research, but just not with embryos. I agree with this because my moral values are similar to Bush's in that taking the life of an embryo to donate to science is wrong, but at the same time I think his philosophy needs to change somewhat; we need to adapt as times change and in order to cure these diseases. Changes need to be made, but we don't need to take the lives of embryos.

ZR: I think that stem-cell research is just like any other scientific advancement because at the beginning it is feared and looked down upon, and I think it needs to be accepted because it leads to great things. I think you need to look at the benefits when thinking about this, and I think the benefits will outweigh the moral issues. I think that stem cell research should be supported

because of the potential for great outcomes.

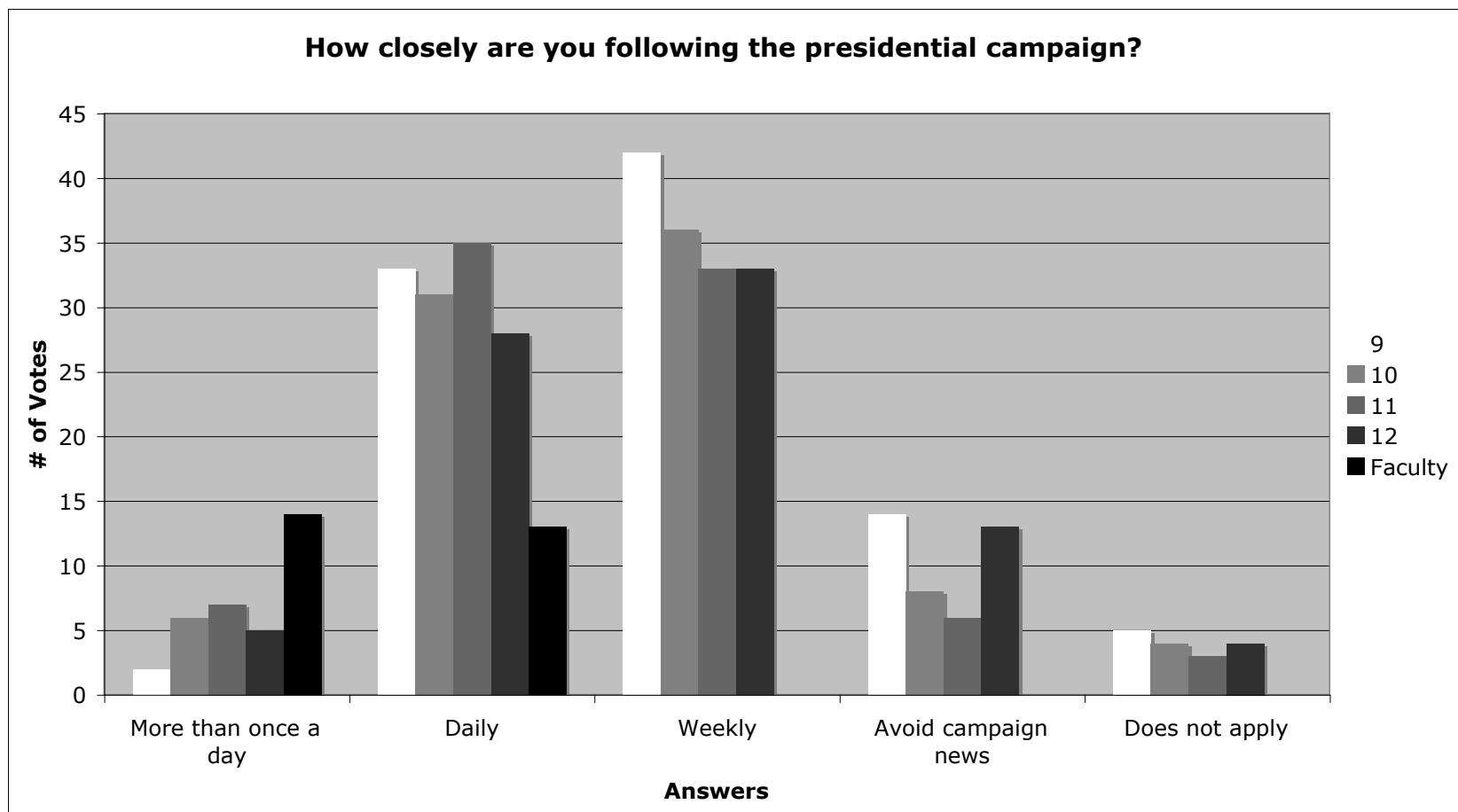
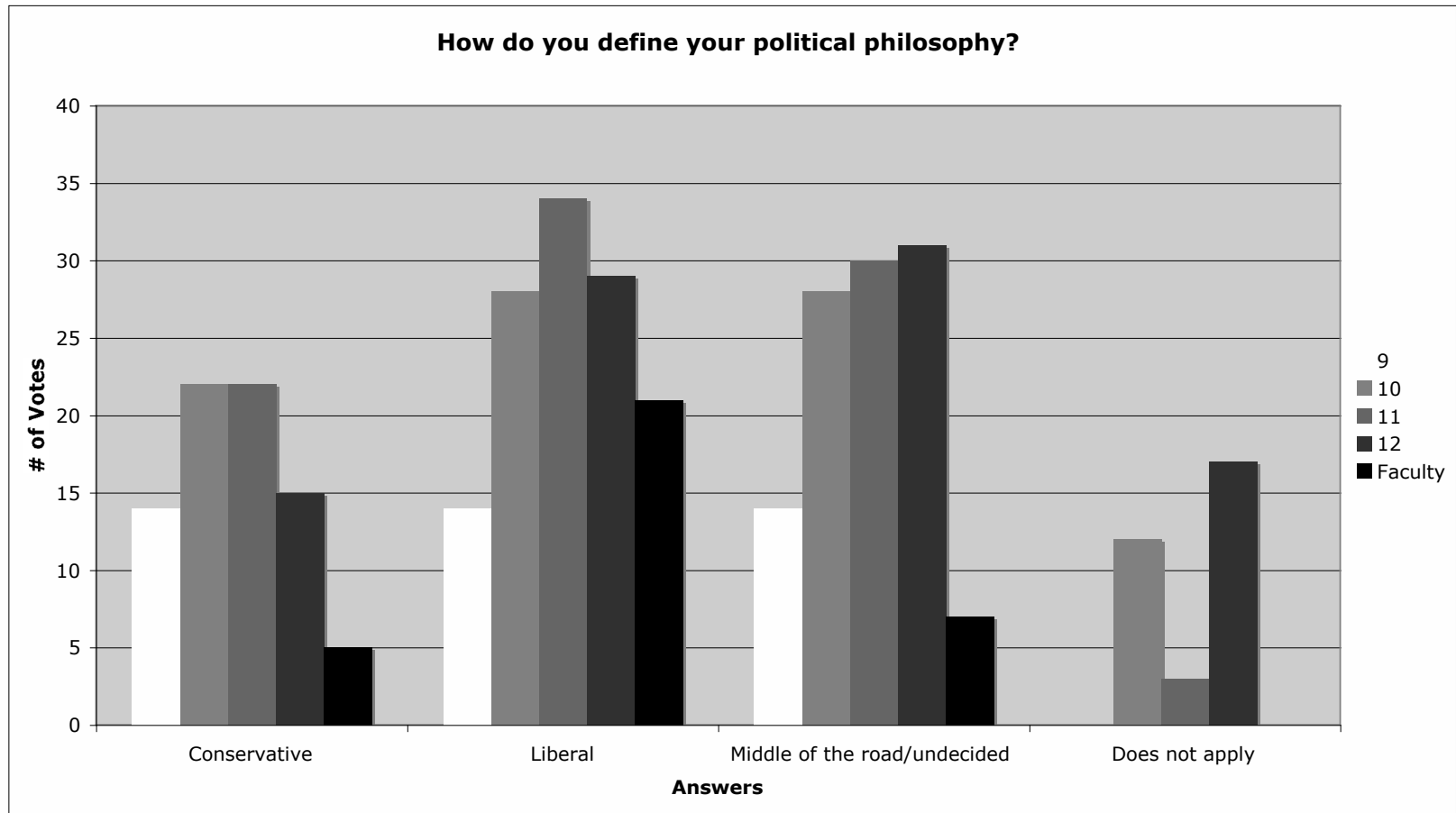
News: Kerry criticized Bush during the first two debates for cutting taxes while the country was at war. He has promised, however, to keep the tax cut for the middle and lower classes. Is this a contradiction?

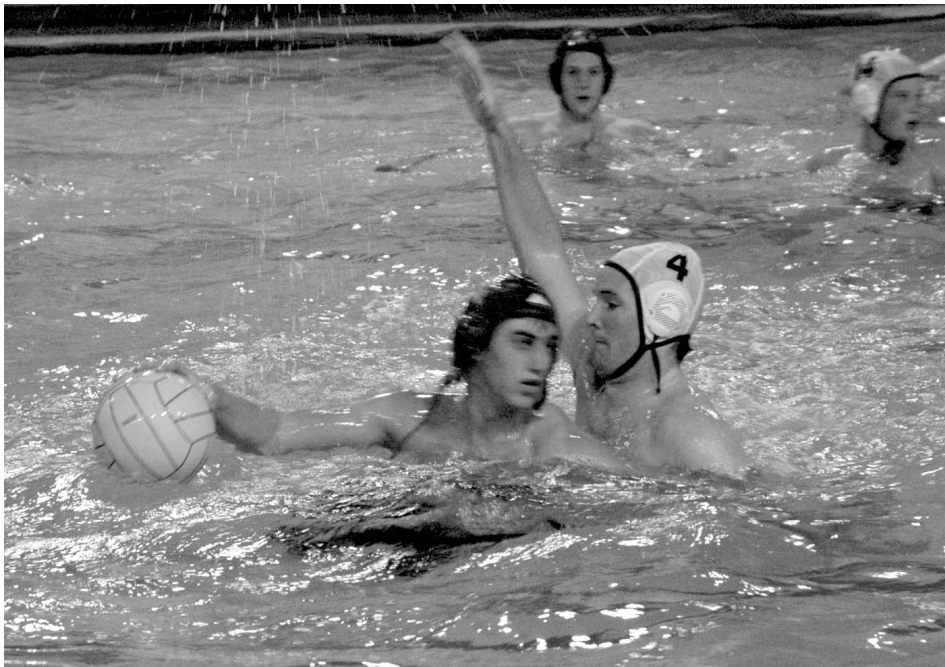
ZR: I think that one thing we need to take into account is that no other president in history has lowered taxes at a time of war. For George Bush to be the first one shows that not only is it wrong, but it does not make sense. "W" was given a surplus and created an incredible deficit. I think there are better ways to take care of the United States economy than creating a deficit for my generation and your generation. Kerry has a more effective plan. He is not planning on lowering taxes for the richest and instead he is planning on making more reasonable taxes for the middle class.

JB: You have to remember that there

were a lot of events that led to the economic recession that we had: the tech stock bubble burst, the terrorist attacks, and the war on terror. With Bush's tax cuts, we have gained 1.9 million jobs, [and] unemployment has fallen from 6.3% to 5.6%, which is below the average for the 1970s, 80s, and 90s. In 41 of the 50 states the employment rate was up, while the unemployment rate was down in 47 of the 50. I think it's naïve to say that Bush's tax cuts aren't working when the facts say that they are. With John Kerry's plan, you have to remember who provides the jobs for the middle class. That's the upper class. By cutting the taxes on the upper class, you produce more jobs.

The above opinions are those of the speakers, and do not necessarily represent the editorial position of *The News*.





Varsity Water Polo leader Ryan Smith '05 looks for the shot as teammate Chris Morrow '05 looks on. (Photo by Adrian Kostrubiak)

Water Polo Ends Season With Improvement, Looks Forward to Next Year

BY DAVID FINE

As the summer heat cools and the leaves change color, many children make their last visits to the pool. They enjoy their final swim and feel disappointed because they have to wait until next year for another summer swim. The Gilman Water Polo team experienced similar feelings of disappointment as they hopped out of the pool at the end of the season. They were not disappointed by having to leave the pool, but rather, by their season, which certainly was not their best.

Coach Driscoll, new to the Gilman aquatics program, took over the position of head water polo coach previously held by Coach Budde. Ryan Fackler, a sophomore goalie, said, "For his first year, Coach Driscoll did a good job. Coach Budde was a great coach that everyone liked, and Coach Driscoll really did a great job of filling in the position." Coach Driscoll came into season with high hopes, but he could only do so much after many of the team's best players graduated last year.

With many inexperienced freshmen and a small group of returning players,

the team set out to do their best. In the end, the team's record did not reflect their hard work, as both the Varsity and Junior Varsity teams went without a conference league win throughout the season. The Varsity squad was led by goal leaders Ryan Smith '05 and Chris Morrow '05, along with strong support from Andrew Clark '06 and Matt Youn '05. Though not in the MIAA conference, the Junior Varsity team did get one win in the last game of the season as they beat Gonzaga 9-5. On a brighter note, Coach Driscoll stated, "There were noticeable improvements throughout the season." Looking ahead to the next season, Coach Driscoll remarks, "We only are losing a couple of graduating seniors this year, and there are many interested upcoming freshmen, so our numbers will be good."

Although the Water Polo team had a tough year, they optimistically look to future years. With the many improvements and the experience gained by the underclassmen, along with the interested upcoming freshmen, the future looks like it may bring better success.

Hockey Isn't Just a Winter Sport For This Team

BY JAMES GRIFFIN AND PETER ROGERS

Even though the National Hockey League is on hiatus, hockey is still alive through avid players at devoted high school and college squads like Gilman. Coming off a championship season, the 2004 Gilman Varsity hockey team, along with the Junior Varsity team, is already training for the upcoming season. Designated as an Intramural sport for the fall season, fall hockey consists of a collection of drills on and off the ice. During the first few weeks of the school year, the hockey team focuses mostly on drills on land. The team uses these weeks to work on agility and speed before even stepping foot on the ice. For example, on any given day, the squad can be seen doing step training, street hockey drills, hill drills, or just intense running. Captain Redmond Farha '05 believes, "We are coming together as a team through fall hockey, and I think it will pour over into the season."

However, just before the leaves make their yearly transition from the trees to the lush ground, the hockey team converts from the drills on the land. Three

weeks ago, when ice training began, the hockey team put all their land practice to use. Matt Chriss '07 stated, "We got on the ice two days ago, and I can already feel the hard work put in during the dry land practices paying off." The team has to travel an hour away just to prepare for the upcoming winter season for some ice practice, displaying their true dedication to the sport.

Farha declared, "We might not be returning many players, but we have a strong core of young players and good senior leadership." Senior leader Matt Councill '05 confirmed, "We are playing a tougher schedule this year than ever before, and I think this year's team is well-suited for this schedule." Even though the Gilman lineup is different after the graduation of several key players, the Greyhounds are planning on being competitive this season. So, beware rival squads, because Gilman hockey is primed and ready for another year. Or, as Red Farha affirms, "Count on Gilman Hockey to return to old form and try to become repeat champions."

Cross Country Makes Strides On Way to Championships

BY JAMES GRIFFIN

Whizzing by trees and streams, all these objects of everyday life become a blur. Focused and determined on the man ahead, you strive to close the developed gap that is situated between the two of you. Since you both have trained for this moment over the last few days, the distance that separates you and the runner in the forefront is not a question of ability but is a query of mental determination and endurance. This is a scene in the life of a Gilman Cross Country runner.

Unlike past years' squads, which were dictated by close defeats, this season's Cross Country team has done well under new head coach, Mr. Joseph Duncan, and senior leaders Ben Small, Robert and Patrick Benitez, and Teddy Davidson. When asked about the season, Small stated, "So far this year, we have been good at dual meets and great at the invitational meets, which involved a lot of people. At the championship meet, we plan to do some great running since we are again pinned against a large group of people, and we would like to solidify the Gilman crew as a competitive force that is a threat to top teams."

In the first meet of the season, the Gilman Cross Country program made an impression on the whole MIAA league by defeating Curley in both Junior Varsity and Varsity. The following Saturday, Gilman went out to John Hopkins University to compete in the Spiked Shoe Invitational, which draws not only a number of regional schools, but also some schools from as far as Virginia. During this meet, both the Varsity and Junior Varsity made a large indentation with Top 20 times by Small for Varsity, and Tomas Radowich '06, Taz George '08, and Aaron Jordan '08 for JV. A few days after their success at John Hopkins, Gilman Cross Country experienced their first loss in a close competition against Curley. In the weeks following the Curley meet, the Varsity and Junior Varsity began a spell of tough losses to elite teams, including Spalding and McDonough, whose

leading runner, Tristam Thomas, is the unanimous #1 runner of the MIAA. However, on October 2nd, the Greyhound runners' luck changed again, as they tasted the sweet nectar of success for a second time at the Anne Arundel Invitational. At this prominent contest, Gilman succeeded on both Varsity and Junior Varsity levels, winning third in the Varsity competition and second place in the B Race. Coming off their accomplishment at Anne Arundel, the Cross Country team struck at John Carroll with powerful force.

The meet against the Patriots signified the return of two key runners for the Varsity lineup, Davidson and Austin Redwood '06. After suffering an excruciating stress fracture just before the season's start, Davidson was sidelined from participation. However, he bounded back from this painful incident midseason and has become a major factor in the Greyhounds' season. On the other hand, Redwood suffered his agonizing injury at the halfway mark of the season. Yet, like Davidson, he returned, ready to strike the courses of the MIAA. For their last meet of the season, on October 26th, the Gilman Greyhounds were pitted against the Park School. Thanks to an impressive performance by Small and Robert Benitez, as well as decisive running by Davidson and Redwood, the Varsity Greyhounds finished their season with a win, completing their year at a record of 3-5, which is better than any record this team has posted in the past four years. On the Junior Varsity level, Gilman wrapped up their term at 4-4. Both teams will finish the season on November 3rd at the MIAA Championships.

With four seniors departing this season, it may appear that the Gilman Cross Country will return to shambles, yet this is not the case. Davidson believes, "The future is looking bright with the underclassmen representation, which has doubled the attendance." Clearly, the Gilman Cross Country program is here to stay as an fierce attribute



Sean Murphy '06 fights for the ball against a Spalding player in a game that resulted in a 2-2 tie. Gilman Varsity Soccer plays its first "A" Conference playoff game in years tomorrow at 3:30. The game is against fourth-ranked Loyola at Loyola. Previously in the season, Gilman has lost 3-2 and won 1-0 against the Dons. (Photo by Ben Daly)

Gilman Edges Loyola in a Game For the Ages

BY MATT YOUN

It was the showdown of the undefeated. Loyola, last year's superb championship team, came into Gilman School without a loss in any their games. They handled such teams as Landon and Georgetown Prep and defeated conference opponent McDonogh. Gilman had one loss to DC powerhouse DeMatha, but was also undefeated in conference play with a win over Mt. St. Joe's. The winner of the game would have the lead on the road to the championship, and the lead would be difficult to relinquish.



Quarterback Marco Simmons '06 scrambles toward the end zone. (Photo by Matt Youn)

On October 23, in front of a strong crowd of Gilman and Loyola fans, the two teams battled in a game with fantastic twists and an incredible ending.

The game began with Gilman deep in its own territory, and the defenses both made their statement. Loyola forced the Gilman offense to go 3 and out, whereas the Gilman defense charged for a sack by Andrew Pyke '05 on their first defensive play of the game. For the first quarter, it was a battle for field position, with neither team making much progress on the offensive side. Things turned, however, in the second quarter, with a good dose of Gilman running. Gilman pushed the chains down the field with tough running, leading to a touchdown by Sean Price '06 to put the score at 7-0. Gilman then gave Loyola the ball back in deep territory, leading to a punt by Loyola that was blocked by Travis Hale '05 and recovered by Reggie Fugett '06, who pounced on the ball in end zone. With a missed extra point, the score was 13-0.

Loyola fought back, however, led by quarterback Joe Lennon and multifaceted star Brady Smith, who, despite injuries, played at running back instead of his normal position of quarterback. The Dons passed the ball for two touchdowns before the half ended. The Dons missed an extra point as well, and the score was tied up 13-13 at the half.

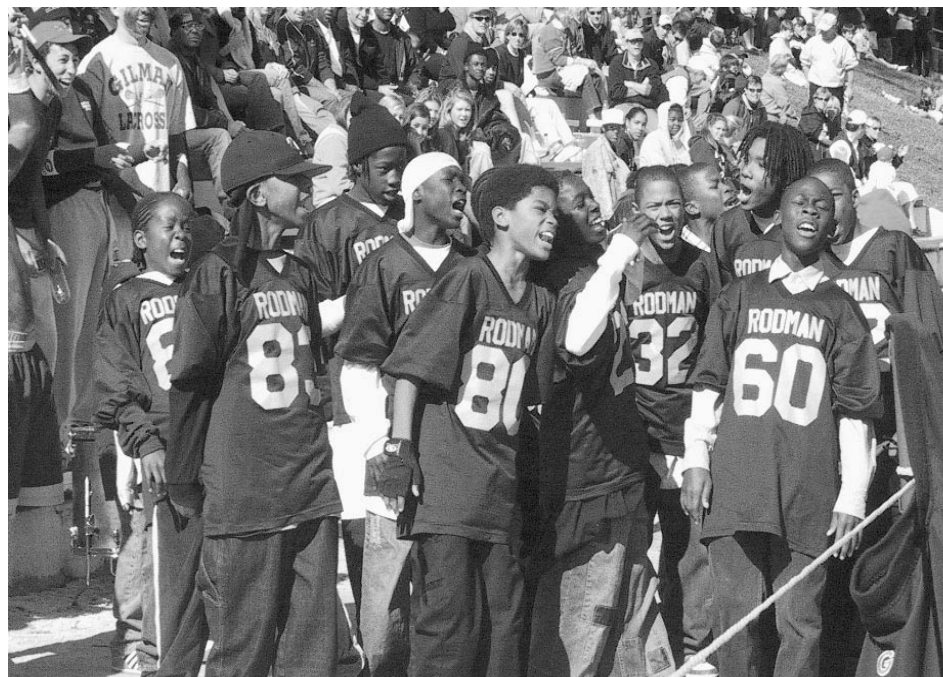
The third quarter continued a defensive struggle until the end of the quarter, with the offense capitalizing on a Ben Eaton

'07 fumble in the red zone, scoring a touchdown on quarterback Marco Simmons '06 run. Unfortunately, the extra point did not sail through again, leaving the score 19-13. Both of the defenses continued to play well, though, and the game led to an enthralling last few minutes of struggle between the Loyola offense and the Gilman defense.

With 4 minutes left on the clock, Loyola's offense faced a fourth and short in Gilman territory and ran for it, but the Gilman defensive line put a stop to

it to gain the ball back. The Gilman offense went 3 and out, and Loyola had one last two-minute drive to go for a touchdown. The Dons pushed forward, making their way to the Gilman 6-yard line with 10 seconds left on the clock. The Dons ran the ball,

and the Greyhounds made the stop. As the clock wound down to zero, it



Spectators Team Rodman lead a cheer. (Photo by Matt Youn)

appeared that the game was over, and the crowd of Gilman faithful rushed the field, only to find that Loyola had called a timeout right before the buzzer. Following the timeout, Loyola quarterback



Sean Price '06 exults after a touchdown run. (Photo by Matt Youn)

made a stop, with a block by Kevin Carroll '06. Justin Wiley '05 of the defense commented, "It was a really clutch play. Some of the kids' heads were down, but we came together and made something happen, and fortunately, it worked for us in the end."

The two teams took to overtime next, with the rules of each team getting a shot at the end zone in four downs from the other team's 10-yard line. The Greyhounds took their turn first, and Price ran the ball in on the second down for a 7-yard touchdown, followed by an extra point by Luke Bell '05 to make the score 26-19. The Dons took the ball next, and on the first play, Eaton made another excellent defensive play by intercepting the pass near the end zone, ending the game with a Gilman victory of 26-19. The Gilman crowd rightfully charged the field this time as the school enjoyed the taste of victory.

With a bye this weekend, the Greyhounds will end the season with games at Calvert Hall and at home against McDonogh. The team has the championship in its grasp, and with the heart that it has right now, the team looks to keep it.

Lennon made a diving leap into the end zone for a touchdown with no time left on the clock. The score was 19-19, with only an extra point for Loyola to win it. Gilman refused to give up the game, however, and the special teams unit



The strong numbers of the Gilman Superfans cheer on the team. (Photo by Matt Youn)



Brian Carroll '06 gets ready to pounce on his Loyola prey. (Photo by Matt Youn)